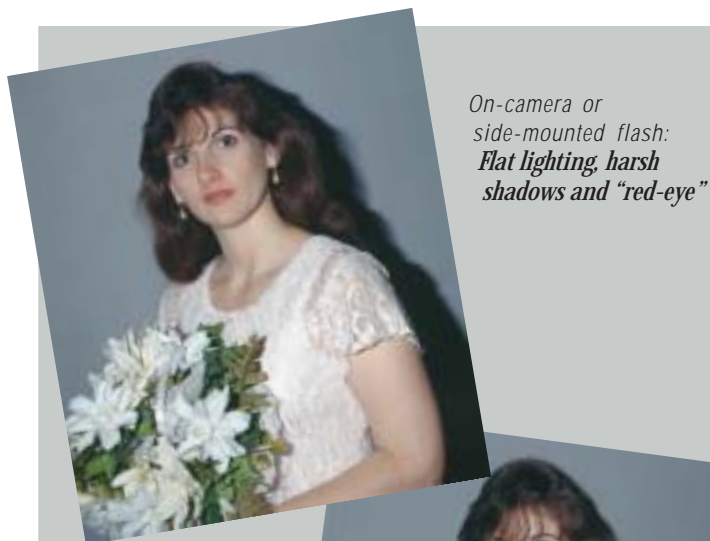


# Stroboframe is the world leader in professional flash bracket innovation.



*On-camera or side-mounted flash:  
Flat lighting, harsh shadows and "red-eye"*



*With a Stroboframe bracket:  
Better lighting, with subdued shadows and no "red-eye"*

## Centered, Overhead Flash... The Key to Professional Lighting

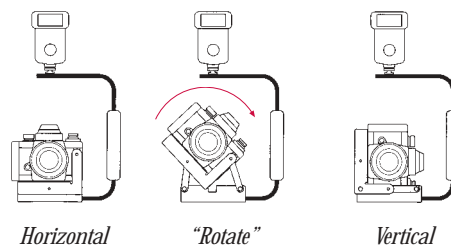
*You can create truly professional, studio-quality photographs with the Stroboframe flash bracket system. Stroboframe brackets position the flash unit high overhead, eliminating side shadows and "red-eye," giving you better lighting. With Stroboframe brackets, you'll produce more natural, flattering photographs that will delight your clients.*

First introduced in 1976 by engineer/photographer Conrad Sloop, Stroboframe flash brackets have evolved over the years into a comprehensive system known for innovative features and outstanding quality. These flash brackets are used by more wedding photographers than any other make. Sloop's newest Stroboframe brackets offer even more features, to give wedding and special-events photographers more professional results.

### Choose from three types of bracket:

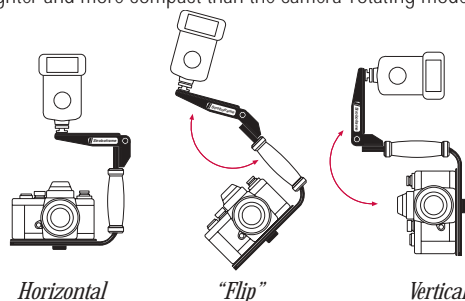
#### 1. Camera-Rotating Brackets — The Most Versatile

Featuring the original, patented Rotary-Link™ this family of brackets is made especially for rectangular-format cameras. These brackets allow you to rotate the camera, keeping the flash centered above the lens for both horizontal and vertical compositions. This design permits unlimited flash positioning and aiming. It is also the best bracket for use with a tripod. Rotary-Link brackets are the most versatile of the Stroboframe system.



#### 2. Flash-Rotating Brackets — Compact and Lightweight

These brackets rotate the flash, rather than the camera, to keep the flash centered over the lens for horizontal and vertical compositions. They are generally lighter and more compact than the camera-rotating models.



#### 3. Square-Format Brackets — For 6 x 6 Cameras

Since square is square, there is no need to rotate the camera or flash. These non-rotating brackets still keep the flash centered over the lens, while allowing the flash unit to be adjusted for tilt and bounce. Square-format brackets work well on a tripod, too.

#### For every camera, for every flash

All Stroboframe brackets are supported by a full range of flash mounts, Camera Anti-Twist ("AT") Plates and quick-release ("QR") options. Moreover, these accessories are interchangeable for many of the brackets, so that if your needs or equipment change, your Stroboframe system will never become obsolete.

#### Superior design, materials and manufacture

In designing our brackets, we call upon two decades of our own experience as well as the comments and suggestions of professional photographers. Our products are field-tested before they are introduced. What you get is a proven bracket with features that make photography easier, help you be more productive and deliver superior results.

Stroboframe brackets are made in the USA. They are constructed of aircraft-quality aluminum with baked-on epoxy finishes for long wear. All rotating components feature nylon bearings or inserts. Hand grips are made of either selected American walnut or cushioned, high-density neoprene foam. All Stroboframe products carry a five-year limited warranty without the fine print. If it breaks, we will fix it!